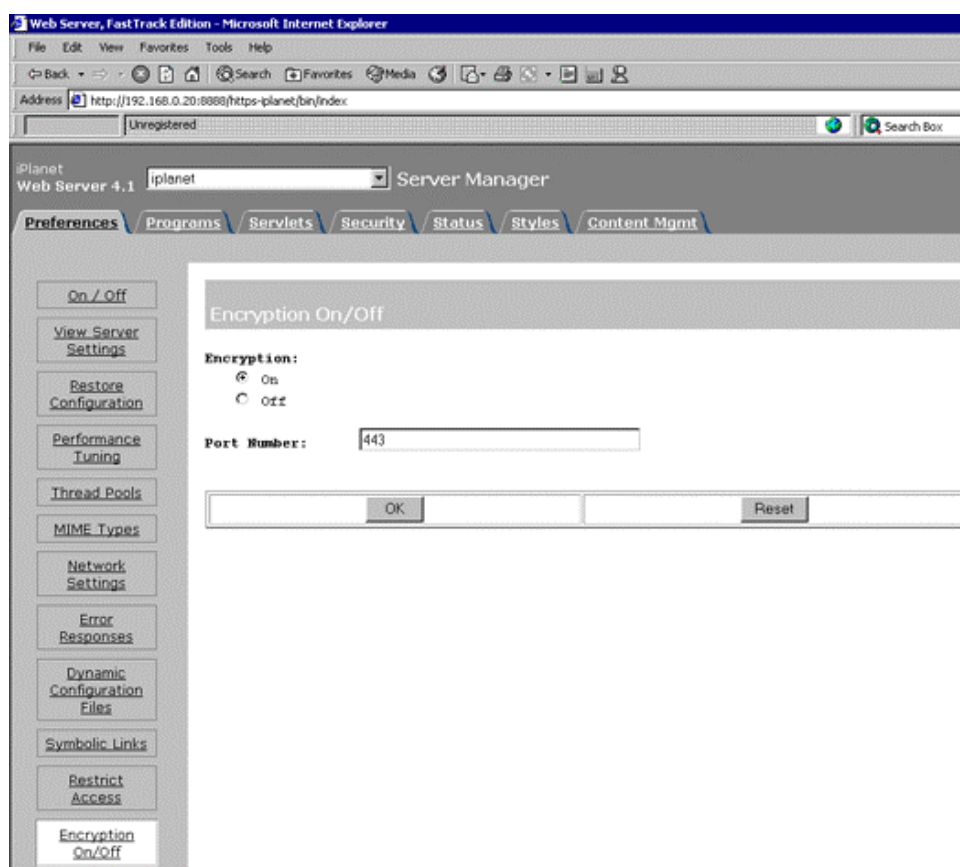




5. Accept the certificate. (do not shutdown or restart the server until all steps have been completed).
6. For installing the Intermediate CA Certificate, repeat from step 3 using the text from the Intermediate CA Certificate.
7. For installing the SSL certificate, repeat from step 3 again using the text from the SSL certificate, but this time choosing This Server instead of Server Certificate Chain.
8. At this step, all certificates are installed and SSL now needs to be activated.
9. Select the Preferences tab and then Encryption On/Off.
10. Set encryption to 'On' and Port to 443, click OK, then Save and Apply.



11. Shutdown and restart the server.